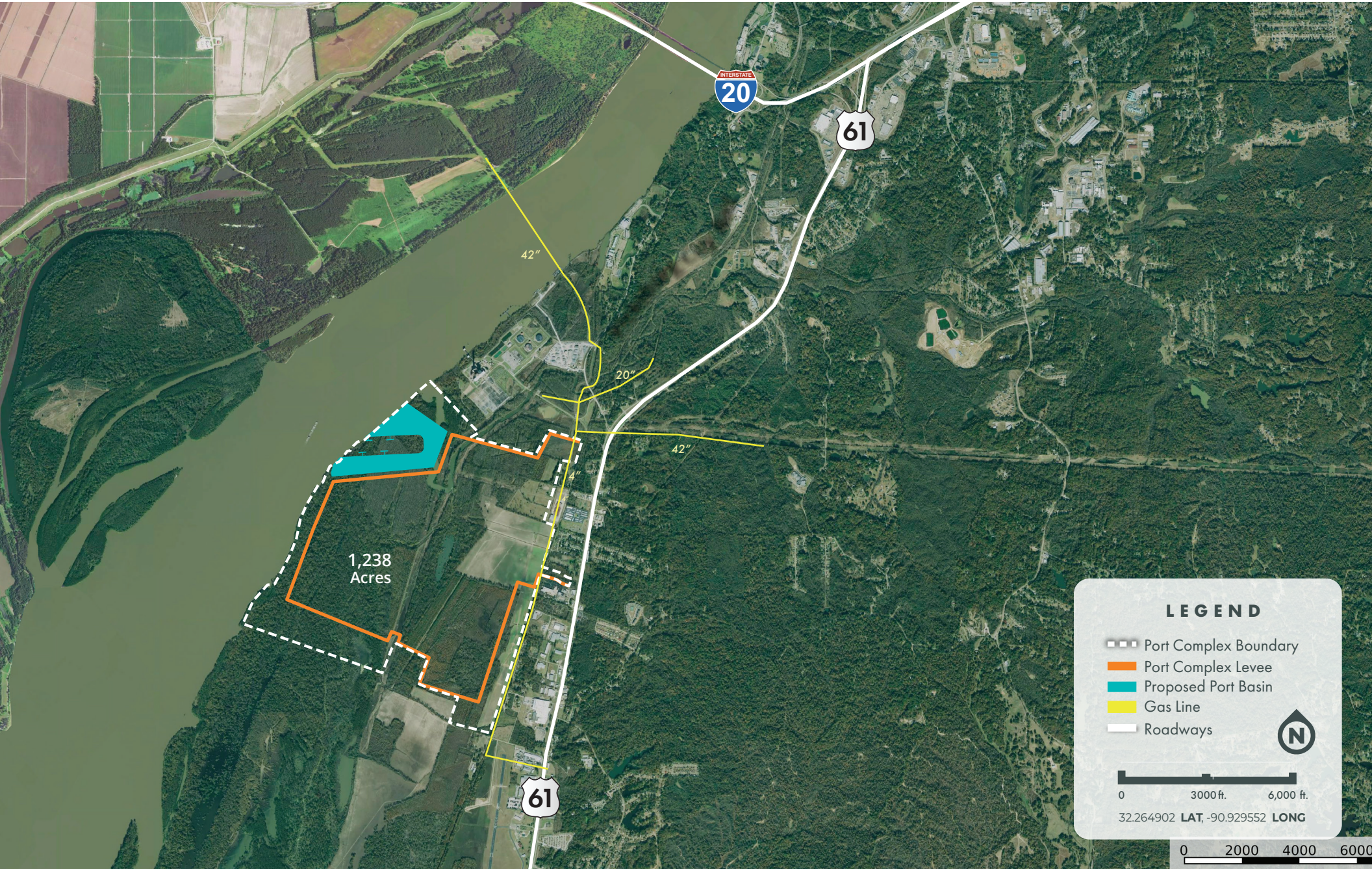




# MISSISSIPPI PORT COMPLEX AT VICKSBURG

WARREN COUNTY MISSISSIPPI



**LEGEND**

- Port Complex Boundary
- Port Complex Levee
- Proposed Port Basin
- Gas Line
- Roadways

0 3000 ft. 6000 ft.

32.264902 LAT, -90.929552 LONG